

**GANGA INSTITUTE OF TECHNOLOGY AND MANAGEMENT**  
**DEPARTMENT OF ELECTRONICS AND COMMUNICATION ENGINEERING**

---

**FEEDBACK ANALYSIS**  
**SESSION-2023-24**

**Stakeholders**

<b>SR. NO.</b>	<b>STAKEHOLDERS</b>	<b>SAMPLE SIZE</b>
1	STUDENTS	16
2	ALUMNI	14
3	FACULTY	9
4	EMPLOYERS	4

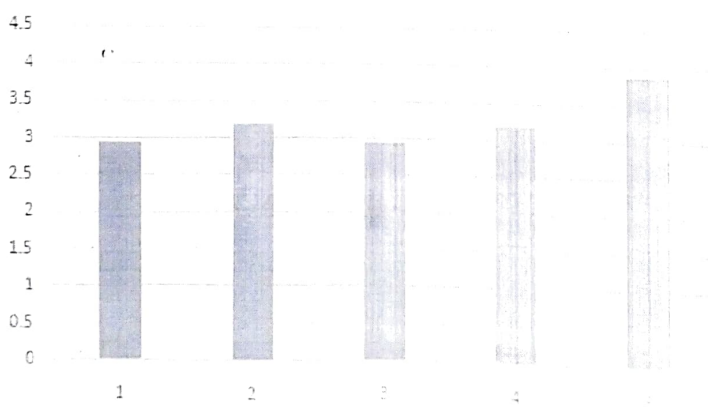


**GANGA INSTITUTE OF TECHNOLOGY AND MANAGEMENT**  
**DEPARTMENT OF ELECTRONICS AND COMMUNICATION ENGINEERING**

**FEEDBACK ANALYSIS**  
**STUDENTS' FEEDBACK ON CURRICULUM 2023-24**

Q. No.	Description	Excellent (5)	Very Good (4)	Good (3)	Average (2)	Fair (1)	Avg.	Action Required
Q1	Rate the syllabus and sequence of courses in the programme.	4	1	3	6	2	2.93	YES
Q2	Rate the offering of the electives in terms of their relevance to the specialized streams.	3	3	5	4	1	3.18	NO
Q3	Rate the offering of the electives in relation to technological/managerial advancements.	2	4	2	7	1	2.93	YES
Q4	Rate the adequacy of content of the courses for extra/self-learning.	4	3	3	4	2	3.18	NO
Q5	Rate the balance between theory and practical courses.	7	3	3	3	0	3.87	NO

**STUDENTS' FEEDBACK ON CURRICULUM**

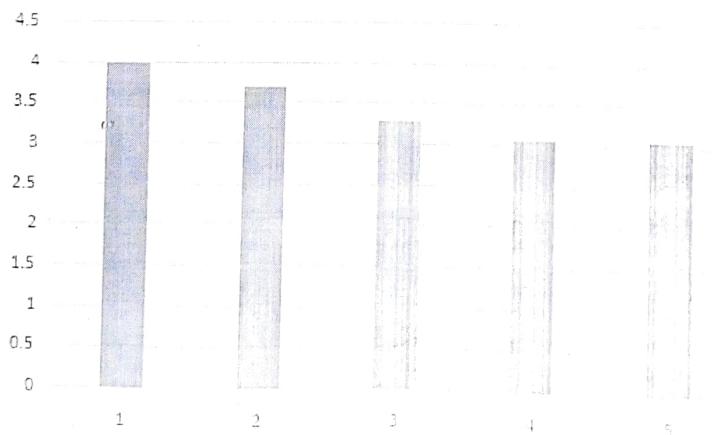


**GANGA INSTITUTE OF TECHNOLOGY AND MANAGEMENT**  
**DEPARTMENT OF ELECTRONICS AND COMMUNICATION ENGINEERING**

**FEEDBACK ANALYSIS**  
**ALUMNI'S FEEDBACK ON CURRICULUM 2023-24**

Q. No.	Description	Excellent (5)	Very Good (4)	Good (3)	Average (2)	Fair (1)	Avg.	Action Required
Q1	Rate the extent to which the curriculum meets the prerequisite and basic knowledge required for the professional career/ higher studies.	5	6	2	0	1	4.00	NO
Q2	Rate the adequateness of the courses offered in the program.	5	5	0	3	1	3.71	NO
Q3	Rate the usefulness of Elective courses offered in relation to technological / managerial advancements.	5	0	3	6	0	3.29	NO
Q4	Rate the sufficiency of syllabus content to bridge the gap between academics and industry.	1	4	4	5	0	3.07	NO
Q5	Rate the skills acquired from the curriculum to face the industry/ society challenges.	2	3	4	4	1	3.07	NO

**ALUMNI'S FEEDBACK**

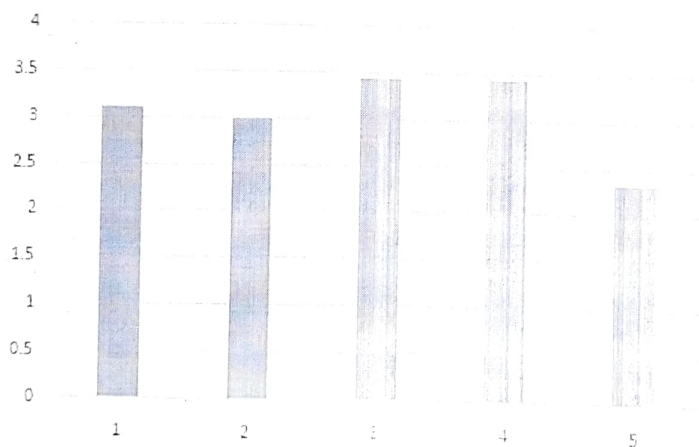


**GANGA INSTITUTE OF TECHNOLOGY AND MANAGEMENT**  
**DEPARTMENT OF ELECTRONICS AND COMMUNICATION ENGINEERING**

**FEEDBACK ANALYSIS**  
**FACULTY FEEDBACK ON CURRICULUM 2023-24**

Q. No.	Description	Excellent (5)	Very Good (4)	Good (3)	Average (2)	Fair (1)	Avg.	Action Required
Q1	Rate the course outcomes defined in the curriculum.	3	0	3	1	2	3.11	NO
Q2	Rate the suitability of the text books/ reference books suggested in the curriculum.	1	4	1	0	3	3.0	NO
Q3	Rate the distribution of contact hours to the course.	2	3	2	1	1	3.44	NO
Q4	Rate the balance between theory and practical courses.	1	4	2	2	0	3.44	NO
Q5	Rate the electives offered in relation to technological / managerial advancements (G-Scheme).	0	2	2	2	3	2.33	YES

**FACULTY FEEDBACK**



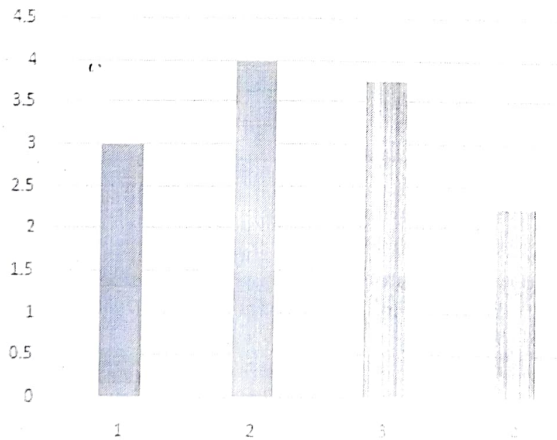
**HOD ECE**

**GANGA INSTITUTE OF TECHNOLOGY AND MANAGEMENT**  
**DEPARTMENT OF ELECTRONICS AND COMMUNICATION ENGINEERING**

**FEEDBACK ANALYSIS**  
**EMPLOYERS' FEEDBACK ON CURRICULUM 2023-24**

Q. No.	Description	Excellent (5)	Very Good (4)	Good (3)	Average (2)	Fair (1)	Avg.	Action Required
Q1	Rate the quality of contents of the university curriculum.	1	0	1	2	0	3.00	NO
Q2	Rate the relevancy/ sufficiency of the courses meeting the industry requirements.	1	2	1	0	0	4.00	NO
Q3	Rate the competencies/outcomes in relation to the course content.	1	1	2	0	0	3.75	NO
Q4	Rate the experiments in terms of their relevance to the real life application.	0	0	2	1	1	2.25	YES
Q5	Rate the scope of the syllabus in enhancing entrepreneurship skills/ lifelong learning/ human values and ethics.	2	0	0	1	1	3.25	NO

**EMPLOYERS' FEEDBACK**



**GANGA INSTITUTE OF TECHNOLOGY AND MANAGEMENT**  
**DEPARTMENT OF ELECTRONICS AND COMMUNICATION ENGINEERING**

---

**" AREAS OF IMPROVEMENT**  
**ON THE BASIS OF FEEDBACK GIVEN BY STAKEHOLDERS**

**Students**

- Q2. Rate the offering of the electives in terms of their relevance to the specialized streams.
- Q3. Rate the offering of the electives in relation to technological/managerial advancements.
- Q4. Rate the adequacy of content of the courses for extra/self-learning.
- Q5. Rate the balance between theory and practical courses.

**Faculty**

- Q5. Rate the electives offered in relation to technological / managerial advancements

**Employers**

- Q4. Rate the experiments in terms of their relevance to the real life application.

**RECOMMENDATIONS**

1. Add-on Courses should be offered for the technological/managerial advancements.
2. Topics beyond Syllabus are to be taught.
3. Course based Industrial Visits/Expert Lectures should be organized.
4. Students should be encouraged to register for NPTEL/SWAYAM/MOOCs courses.



**GANGA INSTITUTE OF TECHNOLOGY AND MANAGEMENT**  
**DEPARTMENT OF ELECTRONICS AND COMMUNICATION ENGINEERING**

**ACTION TAKEN REPORT**

<b>Recommendations</b>	<ol style="list-style-type: none"><li>1. Add-on Courses should be offered for the technological/managerial advancements.</li><li>2. Topics beyond Syllabus are to be taught.</li><li>3. Course based Industrial Visits/Expert Lectures should be organized.</li><li>4. Students should be encouraged to register for NPTEL/SWAYAM/MOOCs courses.</li></ol>
<b>Action Taken</b>	<ol style="list-style-type: none"><li>1. Add-on Courses are offered.</li><li>2. Topics beyond syllabus are taught.</li><li>3. Industrial Visits/Expert Lectures are organized.</li><li>4. Some students registered for NPTEL courses.</li></ol>



**Forwarded:**

- IQAC Coordinator
- Academic Coordinator