

GANGA INSTITUTE OF TECHNOLOGY AND MANAGEMENT
DEPARTMENT OF CIVIL ENGINEERING

FEEDBACK ANALYSIS
SESSION-2023-24

Stakeholders

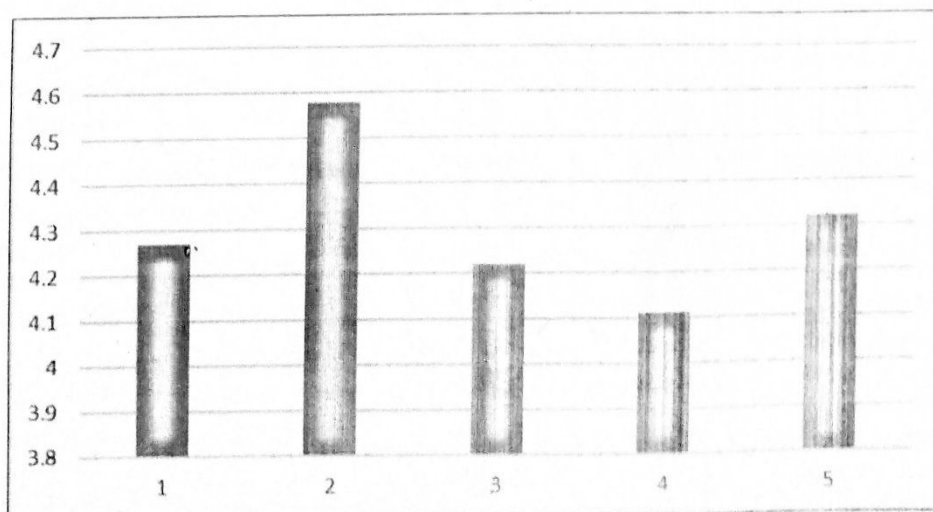
SR. NO.	STAKEHOLDERS	SAMPLE SIZE
1	STUDENTS	68
2	ALUMNI	59
3	FACULTY	6
4	EMPLOYERS	6

GANGA INSTITUTE OF TECHNOLOGY AND MANAGEMENT
DEPARTMENT OF CIVIL ENGINEERING

FEEDBACK ANALYSIS
STUDENTS' FEEDBACK ON CURRICULUM 2023-24

Q. No.	Description	Excellent (5)	Very Good (4)	Good (3)	Average (2)	Fair (1)	Avg.	Action Required
Q1	Rate the syllabus and sequence of courses in the programme.	18	14	17	13	6	4.27	NO
Q2	Rate the offering of the electives in terms of their relevance to the specialized streams.	13	14	19	15	7	4.58	NO
Q3	Rate the offering of the electives in relation to technological/managerial advancements.	18	15	18	10	7	4.22	NO
Q4	Rate the adequacy of content of the courses for extra/self-learning.	22	13	17	11	5	4.11	NO
Q5	Rate the balance between theory and practical courses.	14	17	16	15	6	4.32	NO

STUDENTS' FEEDBACK ANALYSIS

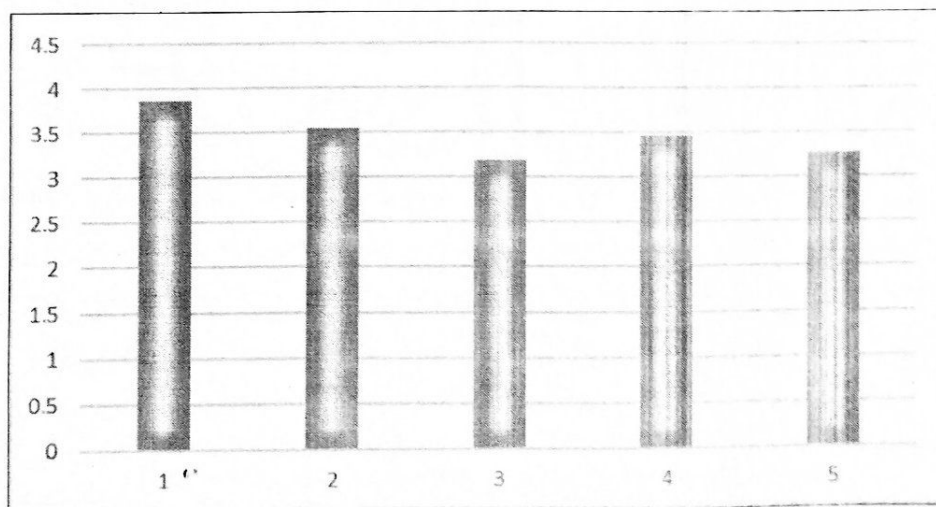


GANGA INSTITUTE OF TECHNOLOGY AND MANAGEMENT
DEPARTMENT OF CIVIL ENGINEERING

FEEDBACK ANALYSIS
ALUMNI'S FEEDBACK ON CURRICULUM 2023-24

Q. No.	Description	Excellent (5)	Very Good (4)	Good (3)	Average (2)	Fair (1)	Avg.	Action Required
Q1	Rate the extent to which the curriculum meets the prerequisite and basic knowledge required for the professional career/ higher studies.	16	19	24	0	0	3.86	NO
Q2	Rate the adequateness of the courses offered in the program.	16	16	16	9	3	3.54	NO
Q3	Rate the usefulness of Elective courses offered in relation to technological / managerial advancements.	11	12	15	19	2	3.19	NO
Q4	Rate the sufficiency of syllabus content to bridge the gap between academics and industry.	13	20	9	16	1	3.47	NO
Q5	Rate the skills acquired from the curriculum to face the industry/ society challenges.	8	17	20	11	3	3.27	NO

ALUMNI'S FEEDBACK

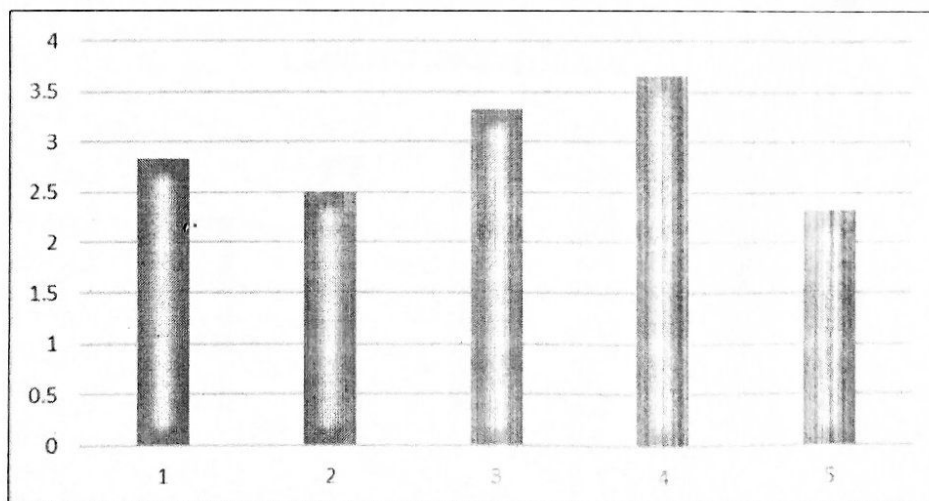


GANGA INSTITUTE OF TECHNOLOGY AND MANAGEMENT
DEPARTMENT OF CIVIL ENGINEERING

FEEDBACK ANALYSIS
FACULTY FEEDBACK ON CURRICULUM 2023-24

Q. No.	Description	Excellent (5)	Very Good (4)	Good (3)	Average (2)	Fair (1)	Avg.	Action Required
Q1	Rate the course outcomes defined in the curriculum.	2	0	1	1	2	2.83	YES
Q2	Rate the suitability of the text books/ reference books suggested in the curriculum.	0	2	0	3	1	2.5	YES
Q3	Rate the distribution of contact hours to the course.	1	2	1	2	0	3.33	NO
Q4	Rate the balance between theory and practical courses.	2	2	1	0	1	3.66	NO
Q5	Rate the electives offered in relation to technological / managerial advancements.	0	1	2	1	2	2.33	YES

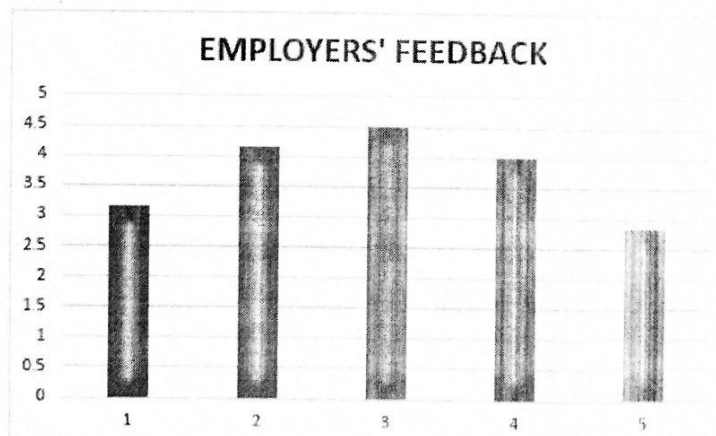
FACULTY FEEDBACK



GANGA INSTITUTE OF TECHNOLOGY AND MANAGEMENT
DEPARTMENT OF CIVIL ENGINEERING

FEEDBACK ANALYSIS
EMPLOYERS' FEEDBACK ON CURRICULUM 2023-24

Q. No.	Description	Excellent (5)	Very Good (4)	Good (3)	Average (2)	Fair (1)	Avg.	Action Required
Q1	Rate the quality of contents of the university curriculum.	0	3	2	0	1	3.16	NO
Q2	Rate the relevancy/ sufficiency of the courses meeting the industry requirements.	2	3	1	0	0	4.16	NO
Q3	Rate the competencies/outcomes in relation to the course content.	4	1	1	0	0	4.50	NO
Q4	Rate the experiments in terms of their relevance to the real life application.	2	3	0	1	0	4.00	NO
Q5	Rate the scope of the syllabus in enhancing entrepreneurship skills/ lifelong learning/ human values and ethics.	1	1	1	2	1	2.83	YES



GANGA INSTITUTE OF TECHNOLOGY AND MANAGEMENT
DEPARTMENT OF CIVIL ENGINEERING

AREAS OF IMPROVEMENT
ON THE BASIS OF FEEDBACK GIVEN BY STAKEHOLDERS

Faculty

- Q1 Rate the course outcomes defined in the curriculum.
- Q2 Rate the suitability of the text books/ reference books suggested in the curriculum.
- Q5 Rate the electives offered in relation to technological / managerial advancements

Employers

- Q5 Rate the scope of the syllabus in enhancing entrepreneurship skills/ lifelong learning/ human values and ethics.

RECOMMENDATIONS



1. Course Outcomes are to be reframed using Bloom's Taxonomy.
2. Books are to be checked and may suggested to the Librarian.
3. Few Add-On Programs are to be offered
4. Course based Industrial Visits/Expert Lectures should be organized.
5. Some Extension Activities are to be organized.



GANGA INSTITUTE OF TECHNOLOGY AND MANAGEMENT
DEPARTMENT OF CIVIL ENGINEERING

ACTION TAKEN REPORT

Recommendations	<ol style="list-style-type: none">1. Course Outcomes are to be reframed using Bloom's Taxonomy.2. Books are to be checked and may suggested to the Librarian.3. Few Add-On Programs are to be offered4. Course based Industrial Visits/Expert Lectures should be organized.5. Some Extension Activities are to be organized.
Action Taken	<ol style="list-style-type: none">1. Course Outcomes are redefined.2. Few books are suggested to the Librarian and purchased.3. Add-on Programs are offered.4. Industrial Visits/Expert Lectures are organized.5. Extension Activities are organized.


HOD

HOD CI

Forwarded:

- IQAC Coordinator
- Academic Coordinator